

SIPLab FRAME™

by Medical Intelligence and SIPLab



**MEDICAL
INTELLIGENCE**

- Non-invasive Stereotactic Reference Frame
- Facilitates Accurate Multimodality Image Fusion
- Integrated With IR Navigation Systems
- Radiotranslucent CT, MR, PET, SPECT Compatible

Works in Progress

SIPLab FRAME™

Multifunctional non-invasive Reference Frame

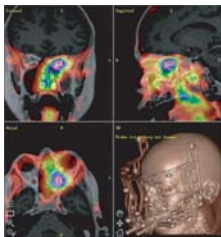
Multimodal markers on the SIP Lab Frame facilitate accurate non-invasive target localization and precise image fusion. The Frame is used for Frameless Stereotactic Biopsies, Computer Assisted Surgery, Diagnostic Imaging and Radiotherapy. The application incorporates a radio-translucent vacuum based mouth piece from the VBH Head Holder to both position the Frame and to immobilize the patient during the imaging and treatment procedures.

SIPLab FRAME™

Features & Benefits:



- Precise definition of external reference fiducials via a non-invasive repeatable vacuum based mouth piece.



- Accurate repeatable positioning of the SIP Lab Frame supports multimodality image fusion. Interchangeable fiducials support CT, MR, PET, SPECT, Ultrasound imaging integrated with IR based navigation.



- Using IR based image guidance the interventional patient setup is completed before entering the OR.



- Positioning of the patient in the OR is both simple and accurate. The non-invasive vacuum based application provides for patient comfort, facilitates multiple imaging studies, and allows for offline planning and accurate patient setup.

Works in Progress



Developed through cooperation with the Interdisciplinary Stereotactic Interventional Planning Laboratory of the University of Innsbruck, Austria

